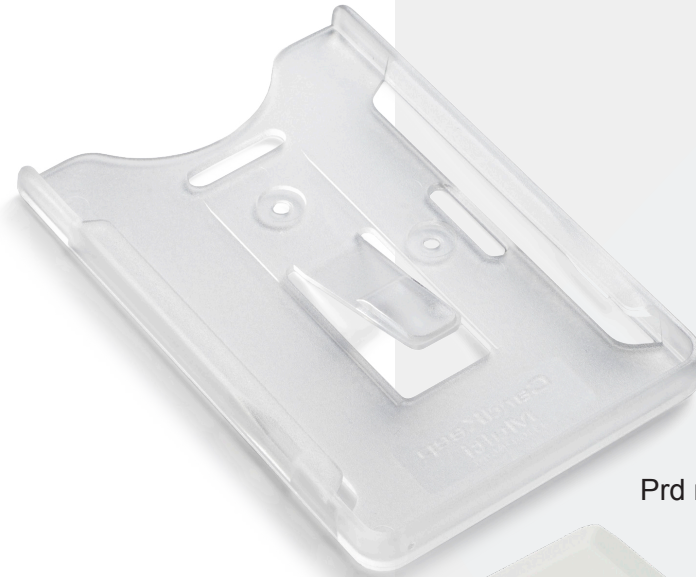


## MarkTag Classic Installation Guide



Prd nr: 195100



Prd nr: 125500

# INSTALLATION GUIDE

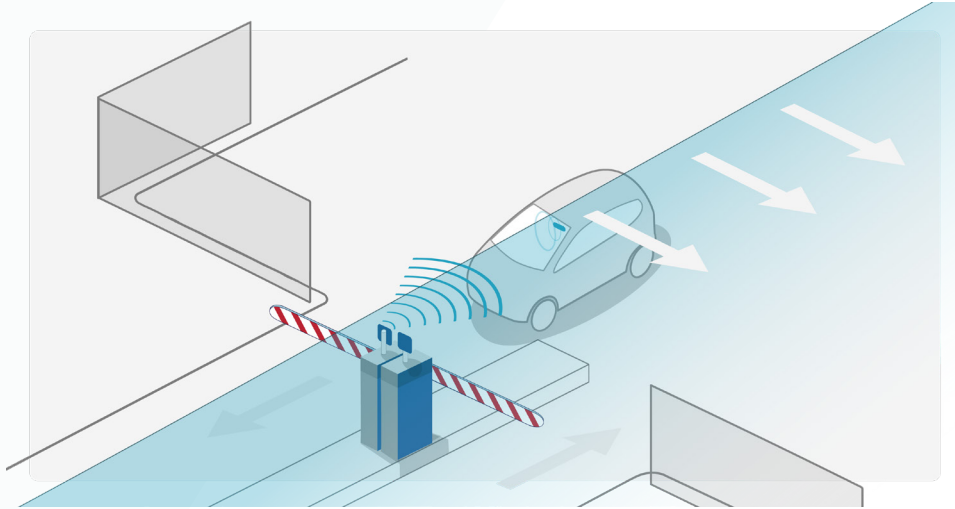
## About the identification Tag:

The TagMaster Mark Tag Classic (product number: 225000) is designed to be used with TagMaster Long Range RFID Readers for access control and automatic vehicle identification applications.

The MarkTag Classic is a long-time proven high-end choice for vehicle identification within parking and access control. Easy to use, highly reliable, can be read from both sides, and is licence-free worldwide as it is using the 2.45GHz frequency band. The tag is placed behind the windshield using an easily installed WinFix placeholder (product number: 195100).

# INSTALLATION GUIDE

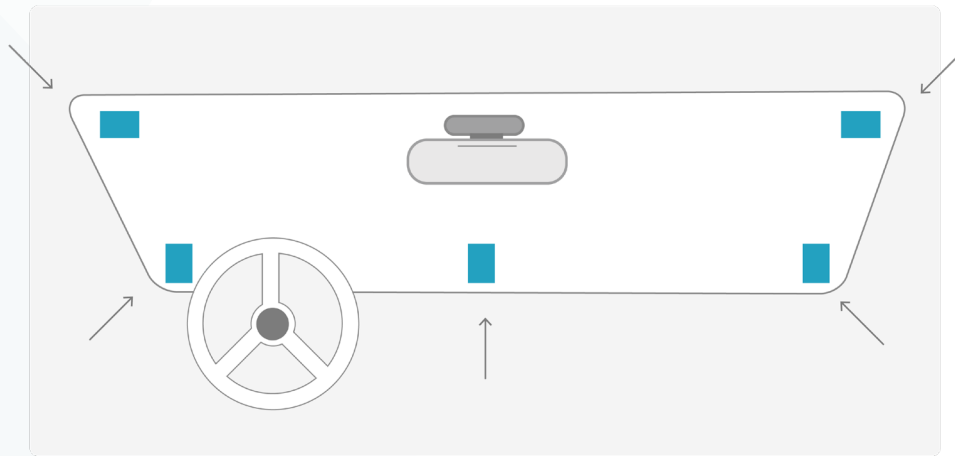
## How to mount the Tag on your windshield:



### 1. Position of the reader

Place the Tag on the windshield, on the same side / as close to the reader as possible. If the reader is placed in a high position, place the Tag in the upper part of the windshield.

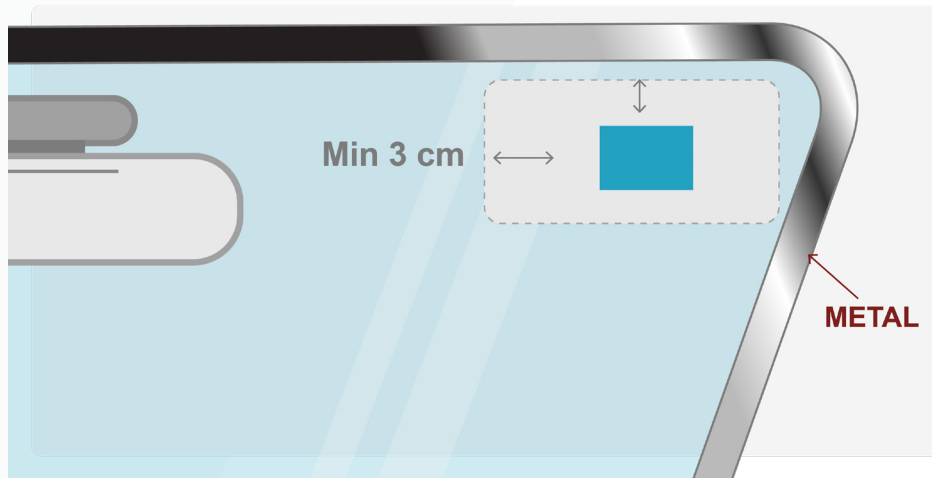
Do not place the Tag on the side windows.



### 2. Where to put the Tag

Suitable positions to mount the WinFix Classic placeholder.

# INSTALLATION GUIDE



## 3. Distance from the edges

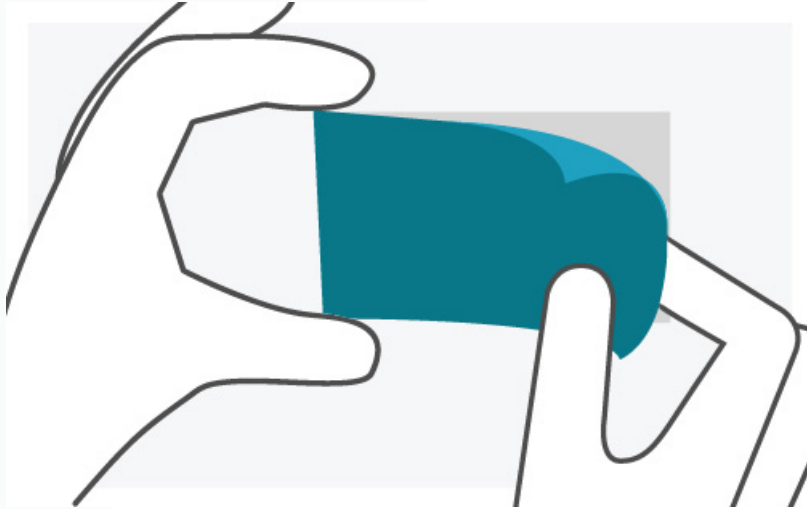
The WinFix Classic placeholder must have minimum 1 Inch or 3cm distance from the windshield edges. Tag performance will decrease if the holder is mounted close to metal or another RFID-tag.



## 4. Clean surface

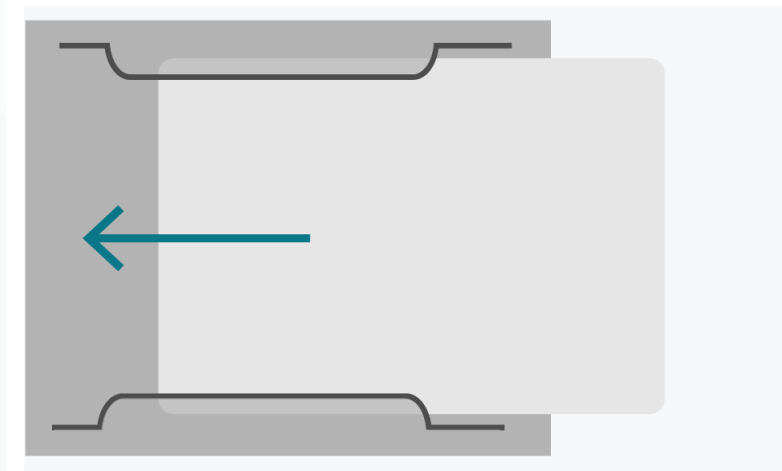
Make sure the surface is clean before applying the WinFix placeholder to the windshield glass

# INSTALLATION GUIDE



## 5. Apply the WinFix holder carefully

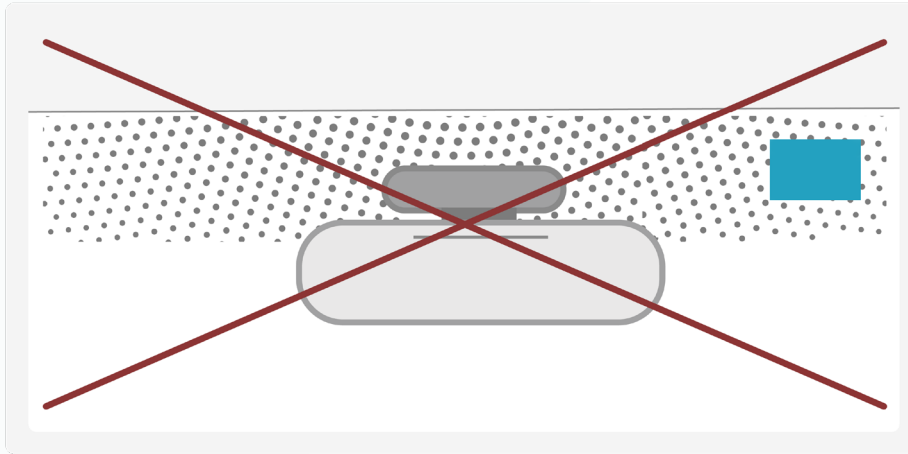
The MarkTag Classic can be read in any orientation, but make sure to leave enough room to insert the Tag in the WinFix placeholder.



## 6. Insert the card in the holder

The MarkTag Classic can be read in any orientation, but make sure to leave enough room to insert the Tag in the WinFix placeholder.

# INSTALLATION GUIDE



## 7. Sunscreen and metal

- The Tag will not work if it is placed behind the sunscreen at the top of the window.
- Do not put the Tag on a third party sunscreen foil attached to the windshield from the inside.
- Do not mount the Tag on metal surfaces or on painted surfaces, as they the paint can contain metal particles. Metal close to the Tag impacts the Tag read-range negatively.

## 8. About the MarkTag

MarkTag Classic emits no radio signals, it only reflects a modulated response to a reader request. As the tag electronics are always powered up and the power consumption is constant, the tag lifetime is predicted to +6 years, independently of the number of reads. As battery levels are getting low, the tag generates a battery low alarm to the reader, which can then inform the host systems when it is time to replace the card. The battery inside the tag/card can not be replaced.

